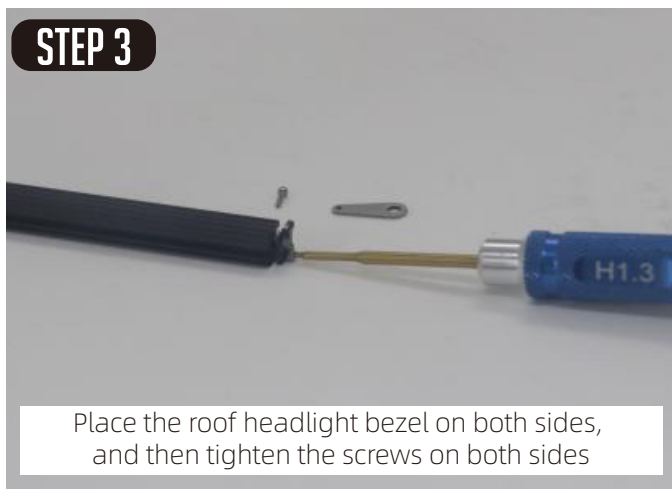
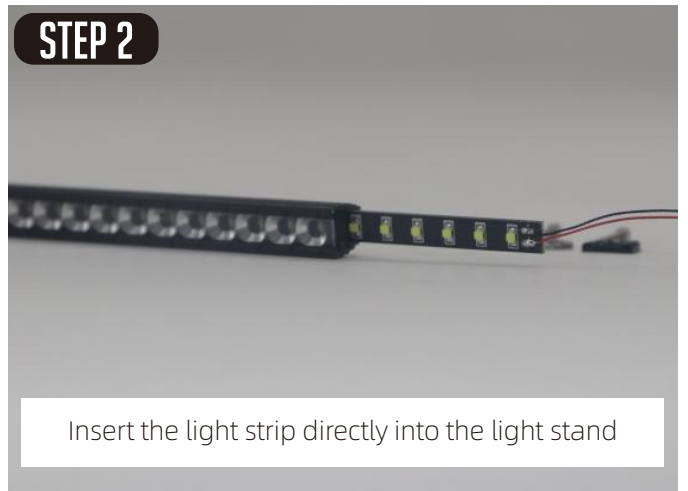
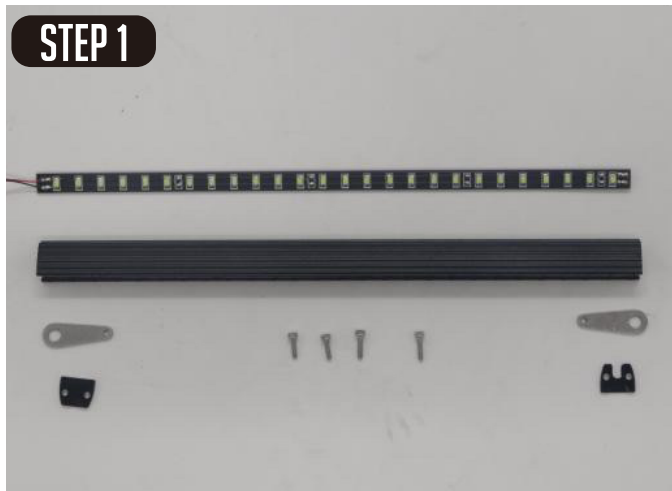
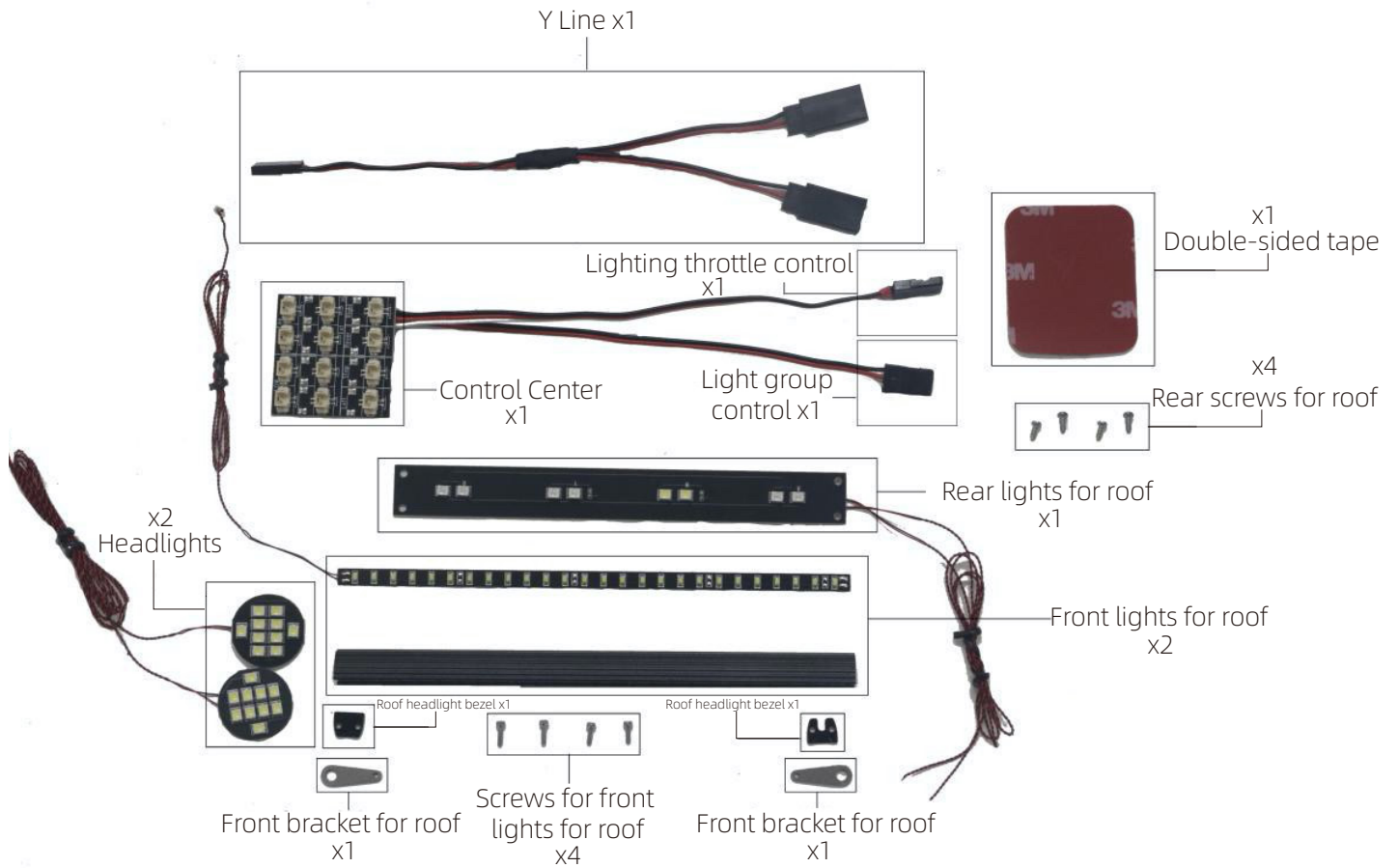
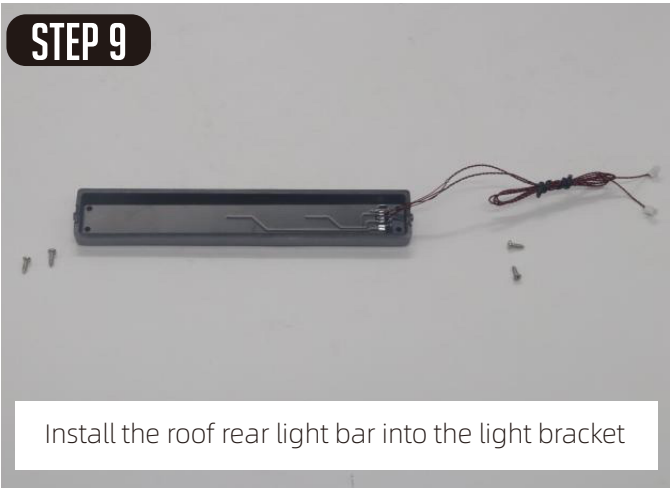
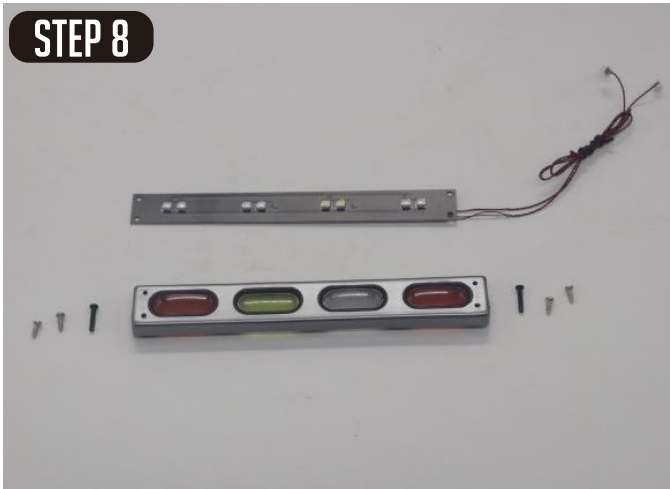
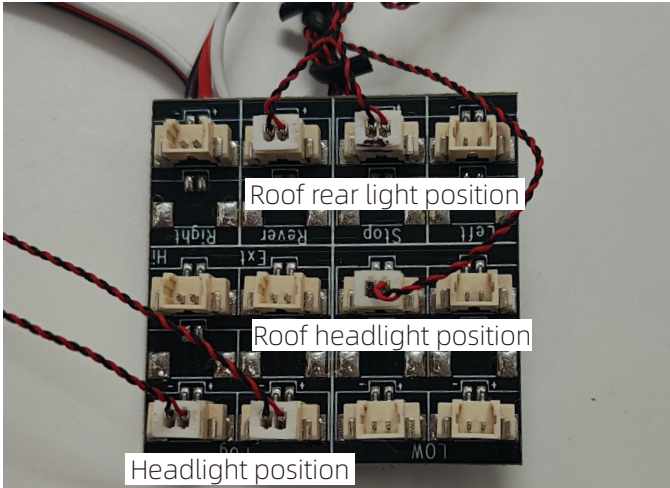
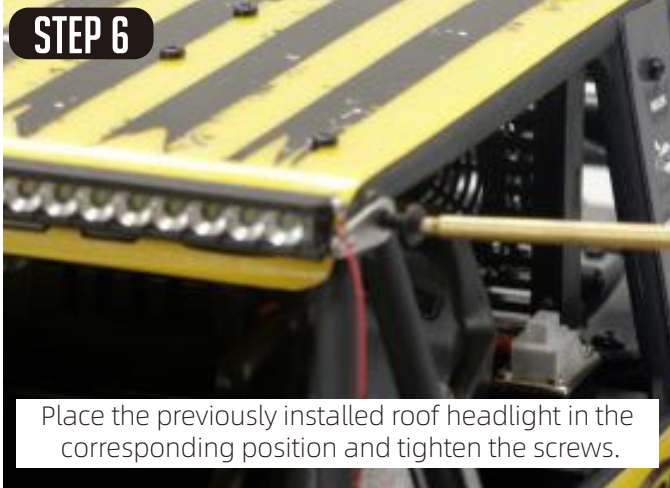


MILLER LIGHTING INSTALLATION MANUAL







STEP 11

Remove the screws here and take down the headlight.



STEP 12



STEP 13

Turn the headlight over and remove the screw



STEP 14

After disassembly is complete, put the headlight strip in and re-tighten the screws.



STEP 15



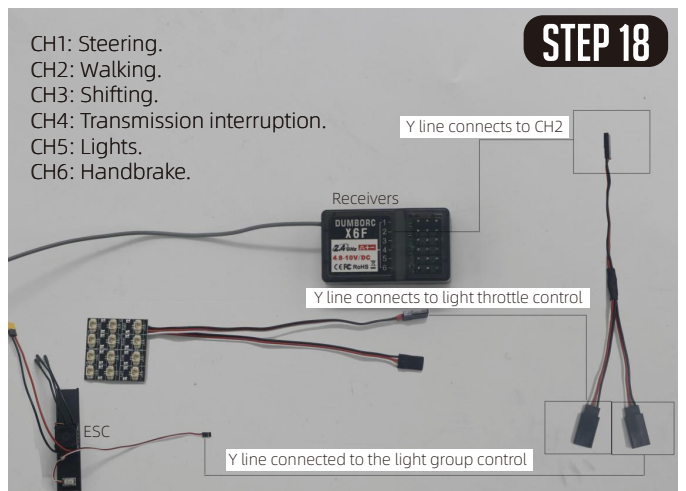
STEP 16

Install the headlights back according to the original steps



STEP 17

Remove the 4 screws here



STEP 18

- CH1: Steering.
- CH2: Walking.
- CH3: Shifting.
- CH4: Transmission interruption.
- CH5: Lights.
- CH6: Handbrake.

Y line connects to CH2

Y line connects to light throttle control

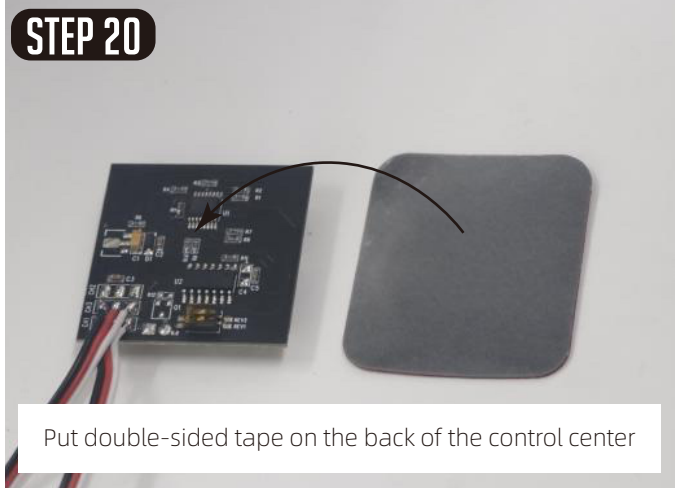
Y line connected to the light group control

STEP 19



Place the receiver here

STEP 20



Put double-sided tape on the back of the control center

STEP 21



Reassemble Faux Fuel Cell



www.rc4wd.com